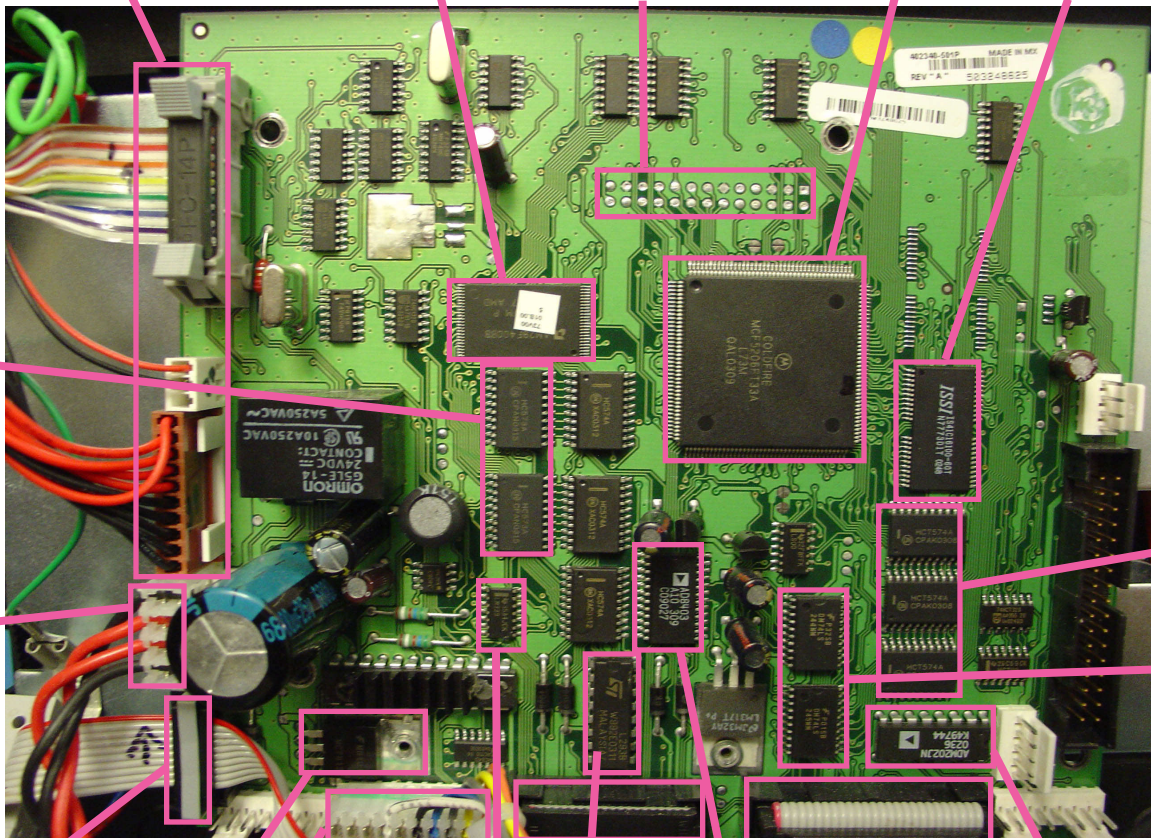


MC5206FT33A "ColdFire" MPU
33 MHz, integrated I2C, UART, DRAM controller, timers

To printer head assembly 4 Mbit boot sector FLASH Debug Port 1x16 Mbit EDO DRAM



HCT573
octal D-latch
(bus demux or
reg ctl)

Power input

HCT574
octal D-flop
(reg ctl)

LS244/245
octal xcvr
(IEEE-1284 iface)

I2C bus to security module

+12V regulator

Front panel LEDs, switches

Quad voltage comparator

L293B motor driver

Internal sensors and controls

4-channel digital potentiometer

RS-232 interface chip

IEEE-1284 parallel port